



RRDJCDX12W

DJ coffin for 2 Numark CDX or HDX turntables with 12 inch mixer



Rugged Road Ready Features

- * Beefy, Stackable Ball Corners
- * Double Anchor Industrial Rivets
- * Recessed, Industrial Grade Latches
- * Recessed Industrial Grade Handles
- * Industrial Grade Rubber Feet
- * Cool Tone Fan Technology
- * Premium 3/8" Vinyl Laminated Plywood
- * Tongue and Groove Locking Fit
- * Front Access Panels
- * Rear Access Cable Port
- * Low Profile Wheels
- * ATA 300 Rating
- * Road Ready Limited Lifetime Warranty

Product Dimensions

Shipping Dimensions (inch): 47.6 x 23.4 x 10.2

Shipping Weight (lbs): 50.6

Product Dimensions (inch): 47 x 22.7 x 9.4

Product Weight (lbs): 46

Shipping Dimensions (cm): 121 x 59.5 x 26

Shipping Weight (kg): 23

Product Dimensions (cm): 119.5 x 57.7 x 24

Product Weight (kg): 21

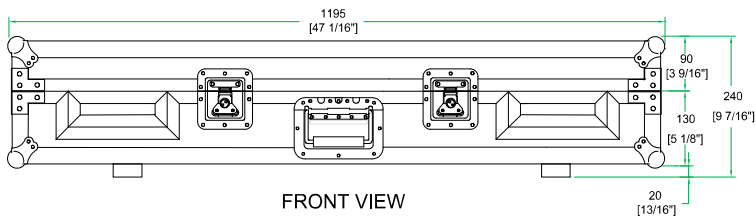
Definitive protection for your gear the RRDJCDX12W is a real heavy hitter. Built to take on the streets, the RRDJCDX12W is designed to hold two Numark CDX or HDX turntables and a 12" mixer. The RRDJCDX12W is built smart with Rugged Road Ready features like low profile wheels for sleek, stealth mobility, smart front access panels for easy access, and a rear cable port for hassle free connections. Go ahead give it a pounding

Road Ready Cases

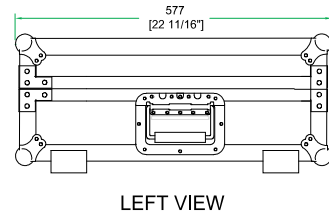
1226 Corral Place * Santa Fe Springs, CA 90670

ph: 562.906.6185 * fax: 562.906.6186

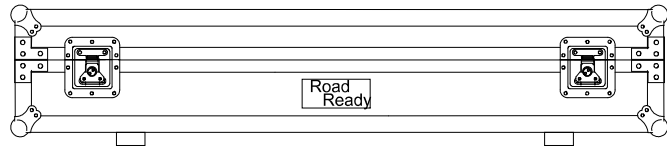
WWW.ROADREADYCASES.COM



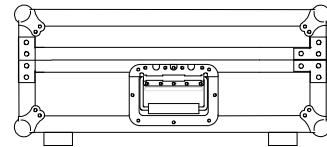
FRONT VIEW



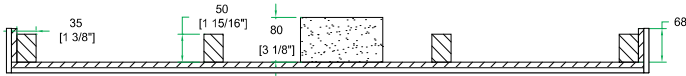
LEFT VIEW



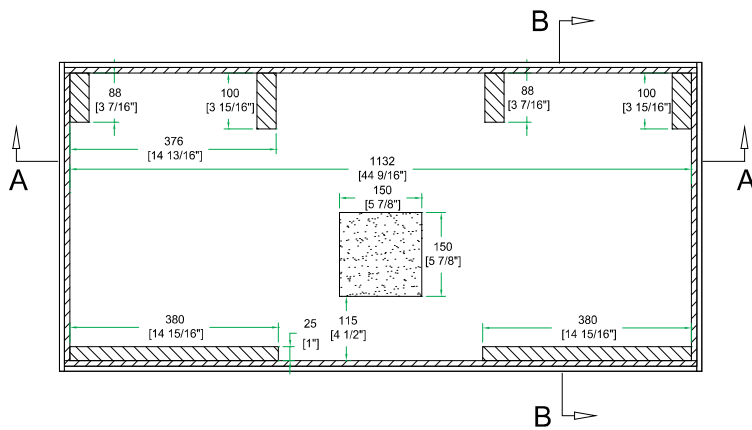
BACK VIEW



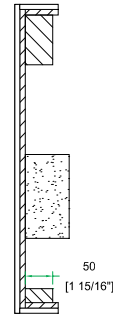
RIGHT VIEW



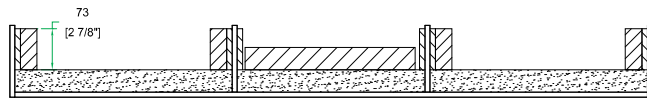
A-A VIEW



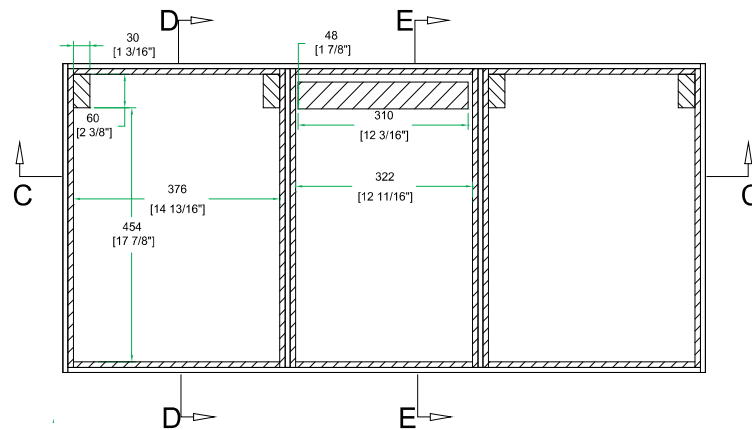
TOP VIEW OF COVER



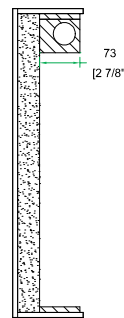
B-B VIEW



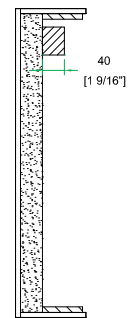
C-C VIEW



TOP VIEW OF BASE



D-D VIEW



E-E VIEW